

Let's Art Together: a step to Social Inclusion

40th Anniversary Symposium, 2 Jun 2017

Louisa Lau, Training Manager

Fu Hong Society, Hong Kong



We believe:

- Born with creativity and aesthete

The purposes of the project: “Let’s Art Together”

- To promote social inclusion
- Enhance the self-esteem and confidence of individuals with disabilities.



The definition of Social Inclusion:

It is widely defined as:

1. Interchange with social integration, social network, social capital;
2. Multi-layered
3. Dynamic
4. Fully participate



The importance of Social Inclusion

- The higher rate of social inclusion in the society, the higher quality of life they have.



Slogan: i-create

- Everyone has its own ability to create their artworks by themselves independently

自主·創藝
I CREATE 可

Role of participant

- Volunteer: Art facilitator
- PWD(People with disability): Potential artist



The content of “Let’s Art Together” Social Inclusion Project

- Train-the trainer workshop
- Art workshop for artist(user) and art facilitator/art partner(volunteer)
- Art exhibition
- Visit tours at gallery
- School-based inclusion activity



Art exhibition held (including art gallery and other venues)	13
	Attendance
Visitors to art gallery	1787
Train the trainer workshops	461
Art workshops	935
School based inclusion activities	1369
Art Fair	1638

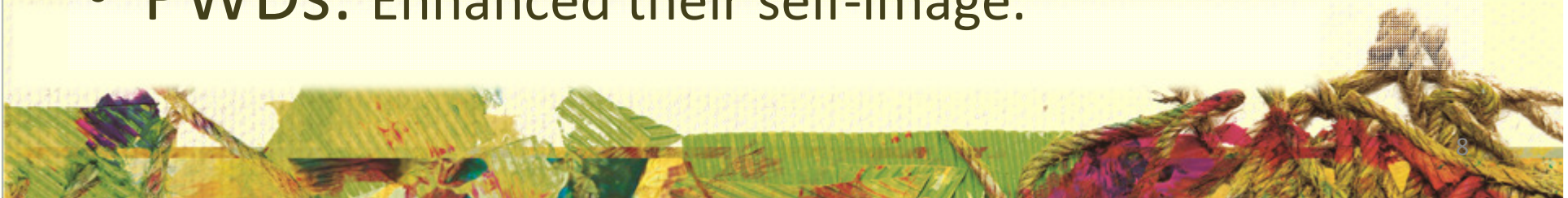


Outcome evaluation

- Pre - and post - questionnaires (Volunteers and PWDs participated in art workshops)

Result

- Volunteers:
 - Positive change in their perception and attitude towards PWDs;
 - Increased their understanding on the artistic talents of PWDs;
- PWDs: Enhanced their self-image.



T-test result (for 6 workshops, sample size: 35 Volunteers)

Question	Mean (Pre)	Mean (Post)	Difference	p<
1: To what extent do I agree that the following items increased after the artist participated in the workshop?				
I. Increase initiatives	6.51	7.14	0.63	0.012
II. Increase self-confidence	6.51	7.20	0.69	0.004
III. Enhance satisfaction	6.91	7.69	0.78	0.003

Remark: Those figures in red in the p column means they are statistically significant.





Question	Mean (Pre)	Mean (Post)	Difference	p<
2: According to the following areas, my level of understandings towards artist is...				
I. Learning ability	5.31	7.09	1.78	0.000
II. Art ability	5.80	7.34	1.54	0.000
III. Creation ability	5.91	7.46	1.55	0.000
IV. Temperament	5.37	7.29	1.92	0.000
V. Uniqueness	5.69	7.37	1.68	0.000
VI. Needs	5.31	7.03	1.72	0.000

Remark: Those figures in red in the p column means they are statistically significant.





Question	Mean (Pre)	Mean (Post)	Difference	p<
3: I think my interaction with the artist is...				
I. Happy	6.83	7.97	1.14	0.000
II. Evasive	4.03	3.17	-0.86	0.006
III. Passive	4.17	3.80	-0.37	0.333
IV. Equal	7.20	7.71	0.51	0.048
V. Able to understand the body language of artists	6.06	7.17	1.11	0.000
VI. Having difficulties in communication	4.74	4.09	-0.65	0.057

Remark: Those figures in red in the p column means they are statistically significant.





T-test result (for 6 workshops, sample size: 35 Volunteers)

Question	Mean (Pre)	Mean (Post)	Difference	p<
4: According to the following areas, I think the changes on me after participating in the art workshop is...				
I. Increased the interest on arts	7.06	7.37	0.31	0.133
II. Increased the ability of creation	6.63	7.11	0.48	0.190
III. Increase the confident to create	7.17	7.20	0.03	0.895
IV. Enhance self-awareness	7.14	7.09	-0.05	0.786

Remark: Those figures in red in the p column means they are statistically significant.





Question	Mean (Pre)	Mean (Post)	Difference	p<
5: According to the following areas, I think the changes on me after participating in the art workshop is...				
I. Make me believe the arts potential of mentally/ physically handicapped persons	7.77	7.89	0.12	0.535
II. Make me know the arts potential of mentally/ physically handicapped persons	7.86	7.91	0.05	0.711
III. Joyful Art Gallery is a platform to facilitate social inclusion	7.71	7.91	0.2	0.292

Remark: Those figures in red in the p column means they are statistically significant.



T-test result (for 6 workshops, sample size: 47 PWDs/workers)

Question	Mean (Pre)	Mean (Post)	Difference	p<
1: How strong you feel your ability is?	6.40	7.51	1.11	0.000
2: How do you feel after participating in the art-creating activities?	7.94	8.57	0.63	0.017

Remark: Those figures in red in the p column means they are statistically significant.



Recommendation

- More opportunities, choices, and freedom to PWDs in art creation
- Community participation for PWDs
- Long term partnership with volunteers
- Long term partnership with the corporation/funder
- Comprehensive training program for art facilitators
- To reach the targeted volunteers who do not know much on PWDs



“Let’s Art Together”

**For PWDs, for everyone,
a step for building a social inclusive
community.**

Thank you!

